

Understanding Autism Spectrum Disorder

This half day information session will examine the complexities of ASD (including Autism and Asperger Syndrome) and how it may impact on individuals across a range of settings, age ranges and levels of functioning.

Difficulties with sensory understanding, communication, socialising, and ability to cope with day to day life will be discussed in depth. This information session will provide an insight into some of the underlying reasons an individual with ASD may present with unusual, challenging, limited and/or amazing skills and behaviours. In addition to this, the presenter will outline some general strategies to assist in the support of an individual with ASD.

The Presenter:

Jenni Machin currently works for Autism Queensland in the outreach and training teams. She has a strong commitment to quality services for children with a disability, their parents/families and the people that support them in their educational settings. She has been a practicing Occupational Therapist for over 20 years, (graduating in 1982). The vast majority of this work has been as a paediatric Occupational Therapist. Prior to commencing with AQ, Jenni worked in various settings including the Seating Clinic; the Cerebral Palsy League of Qld; Queensland Government agencies and educational settings.

When 9am – 12.30pm	Where
Tuesday 19 th May	Laidley Community Centre, 13 Mary St, Laidley

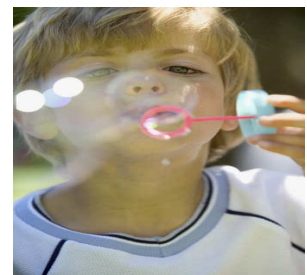
What: This session will involve practical exercises and discussions. Questions and sharing of information /ideas is encouraged and highly desirable to enhance learning outcomes for all.

Specific Outcomes:

What is ASD? Overview of the core features of ASD
By the end of this session participants will be able to recognise the core deficits associated with ASD

General strategies for supporting individuals with ASD

By the end of this session participants will be able to demonstrate an understanding of basic strategies to facilitate their interactions with the person with ASD and/or assist/support their carers.



Who: Parents and carers and support staff, and those with an interest in working with individuals with an ASD.

Cost: \$15 for DSTF Target Group* ☆ \$15 for Non Target Group ☆ **FREE** for parents and unpaid carers
(Cost includes morning tea and lunch)

Limited places available...Registration is essential!
Fax the Application Form to (07) 3234 0474 or send direct to
DSTF, Workforce Council, Ground Floor, 303 Adelaide St, Brisbane, 4000

Places may be limited per organisation depending on interest

*The DSTF target group includes workers in community based organisations who receive funding from DSEQ, unpaid carers and family members of people with a disability. DSTF is funded by Disability Services Queensland

ABN: 32 330 317 817



APPLICATION FORM & TAX INVOICE

Ipswich West Moreton Region Training Coalition



Topic: *Understanding Autism Spectrum Disorder*

Venue: Laidley Community Centre, 13 Mary St, Laidley

Date: Tuesday 19th May 2009

TO APPLY FOR A PLACE IN THIS COURSE PLEASE COMPLETE THE FORM BELOW

Applications will close on Tuesday 5th May. Strictly no registrations will be accepted after this date.

Name			
Organisation (if applicable)			
Postal address			
Town/suburb		Postcode	
E-mail			
Phone no/s		Fax	
<p>Are you a parent or unpaid carer of a person with a disability? <input type="checkbox"/></p> <p>Do you work for a DSQ Funded Service <input type="checkbox"/> YES <input type="checkbox"/> NO</p> <p>Are you a direct support worker? <input type="checkbox"/></p> <p>Are you a manager/coordinator? <input type="checkbox"/></p> <p>Are you a member of a management committee? <input type="checkbox"/></p> <p>Other? Please specify..... <input type="checkbox"/></p>			
Any Essential Dietary Requirements?			
Do you have any disability related needs that require support? Please contact us to arrange details:	For respite costs call Commonwealth Respite & Carelink 1800 059 059		
What is your interest in attending this event?			
Please (✓) Amount Payable (per person) (GST Free)	<input type="checkbox"/> Free – Unpaid carers and parents/family members <input type="checkbox"/> \$15 – Rest of Target Group* <input type="checkbox"/> \$15 – Non target Group		

This Application Form will become a tax invoice on payment.

Payment must be made by cheque, money order or credit card after you receive confirmation of your place on the course. No refunds will be given without seven days notice before the training event.

*The DSTF target group includes workers in community based organisations who receive funding from DSQ, unpaid carers and family members of people with a disability. DSTF is funded by Disability Services Queensland

RETURN THIS FORM BY FAX TO: (07)3234 0474
 or Post to : Ground Floor, 303 Adelaide Street, Brisbane, 4000

For more info about the course, contact the Workforce Council Team - (07) 3404 1493
Free call number available for parents & unpaid carers – 1800 851 848